

## EcoPart

### Heat pump for bedrock, ground and lake heat source

- A heat pump designed for private houses and smaller properties
- Three sizes available in 230V 1ph: 5 / 8.5 and 10.5 kW
- Five sizes available in 400V 3ph: 5 / 7.5 / 8.5 / 10.5 and 12 kW
- The solution for installations in an area with low ceiling height
- Incorporated in the EcoPart is a patented intercooler ensuring high efficiency, economy and long life
- Suitable for single and double pipe systems, convectors and floor heating
- Silent running
- Built-in soft starter



The EcoPart provides an environmental heating solution for private houses, smaller properties and can be used to heat small swimming pools.

The heat pump is a water/water unit designed to utilise a closed collector loop extracting low temperature heat from either bedrock, soil or lake water.

The heat pump evaporator incorporates a unique and patented intercooler which not only increases the system efficiency (COP) but also reduces wear on the compressor and prolongs the life of the unit.

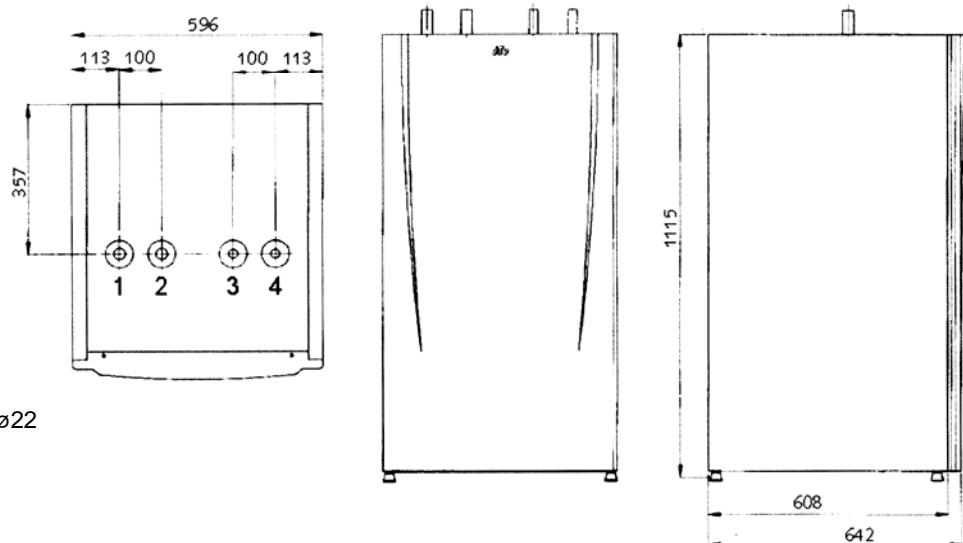
The EcoPart has a 'footprint' of 600mm x 650mm and height of 1115mm.

Both the environmental heating water and ground source collector loop connections are located on the top of the unit.

For installations with limited ceiling height the EcoPart can be integrated with the 1550 EcoEI to provide the equivalent of an EcoHeat.

EcoPart		5	7.5	8.5	10.5	12
Electrical supply options		230V 1ph 400V 3ph	- 400V 3ph	230V 1ph 400V 3ph	230V 1ph 400V 3ph	- 400V 3ph
Nominal electrical input	kW	1.9	2.4	2.9	3.4	4.1
Power consumption compressor + pumps at 35/50°	kW	1.3/1.7	1.8/2.3	2.0/2.5	2.5/3.4	2.9/3.9
Emitted output compressor at 35/50°C	kW	5.9/5.1	7.6/7.1	8.7/7.7	10.4/10.3	12.4/11.6
Max op pressure compressor	A	5	7	9	11	11.6
Min group fuse	A	10				
Water volume evaporator (TS)	litres	3	4.7			5.6
Brine system min/max pressure (PS)	bar	0.2 / 3				
Brine pump adjustment speed		3				
Brine system min/max temp (TS)	°C	-15 / 30				
Refrigerant (R407C)	kg	1.55	2.1			2.5
Cut-off pressure, pressure governor HP/LP	bar	27 / 1.5				

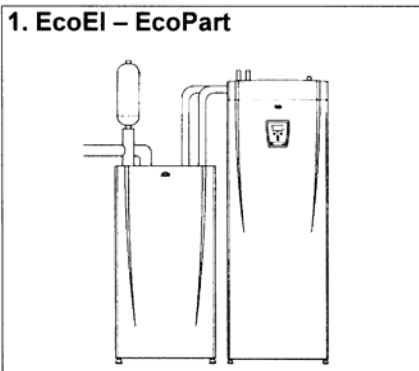
## Measurements



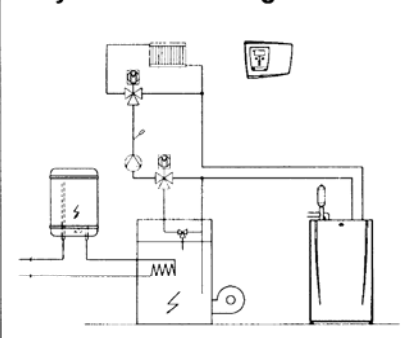
1. From ground  $\varnothing 28$
2. To ground  $\varnothing 28$
3. To boiler  $\varnothing 22$
4. From boiler/circulation pump  $\varnothing 22$

## Hydraulic examples

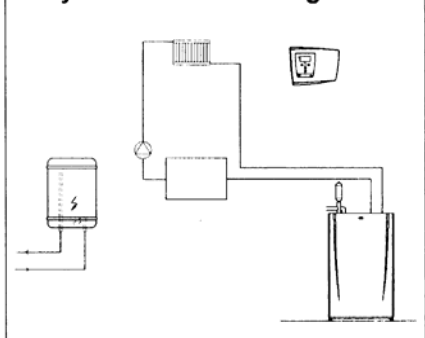
### 1. EcoEI – EcoPart



### 2. System with mixing valve



### 3. System without mixing valve



The EcoPart can be connected to the electrical boiler EcoEI, or to your existing boiler, and the complete system controlled by the EcoLogic – the control system for heat pumps.

### The product complies to the EN directive:

LVD: 73/23/EEC och 93/86 EEC  
EMC: 89/336/EEC  
and is tested according to EN255

Subject to alterations in design

# NU-WAY

NU-WAY LIMITED, P.O. Box 1, Vines Lane, Droitwich,  
Worcestershire, WR9 8NA  
Tel: +44 (0)1905 794331 Fax: +44 (0)1905 794017  
www.nu-way.co.uk



SPRINTBIO LIMITED, Deep Meadows Farm, Pink Road,  
Lacey Green, Princes Risborough, Bucks. HP27 0RG  
Tel: 0845 602 5289 Fax: 01844 399425  
info@sprintbio.com