



EcoEI

An electronically controlled thermal store

- Outputs up to 12 kW 230V 1ph
- Outputs up to 15 kW 400V 3ph
- Provides 220 litres of hot water storage
- Energy-efficient operation all the year round providing environmental heating and domestic hot water (DHW)
- User-friendly control system with an easy to use display
- Floor-mounted
- Designed for top pipework connection
- Available in two heights (1800 and 1550 mm)
- The internal mixing valve automatically provides a uniform and pleasant heating
- Equipped with load governor and current sensor
- Designed for use with the EcoAir heat pump or the EcoPart heat pump

The EcoEI is an electronically controlled thermal store capable of providing both environmental heating water and domestic hot water (DHW). Although capable of use as a stand-alone unit the EcoEI has been specifically designed for integration into a heating system incorporating either an EcoAir or EcoPart heat pump. A heating system utilising a heat pump significantly reduces the electrical power consumption and hence heating costs.

The EcoEI has a 'footprint' of 600mm x 620mm, and with a choice of height of 1800mm or 1550mm the unit can be accommodated in most heating installations. Both the environmental heating water and DHW connections are located on the top of the unit.

Supplied with two electric immersion heater bundles the EcoEI can provide up to 15kW.

DHW is produced in an internal finned coil delivering an 'instantaneous' supply of fresh hot water.

The EcoEI is fitted with an internal baffle enabling hot water to be stored in the cylinder at two different temperatures. This is particularly useful when installed in conjunction with a heat pump as the heat pump can heat the lower temperature water in the base of the cylinder while the immersion heater can be used to maintain the temperature in the upper section hence the system capacity for generating DHW.

A microprocessor controller mounted on the front of the EcoEI provides fully automatic control of the heating system. Environmental heating water is supplied by an internal mixing valve which, together with indoor and outdoor temperature sensors, provide an environment with uniform and pleasant heating. A display on the controller indicates system temperatures and enables heating system set-up and adjustment. The controller is designed to also manage the EcoPart or EcoAir heat pump where these are installed in conjunction with an EcoEI.

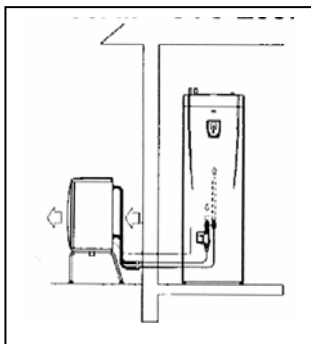
The 1800mm high EcoEI has space in the base of the unit to fit a ground source heat pump module thus providing the option of later conversion to a EcoHeat heat pump.

	Elect. boiler EcoEI		Heat pump / outdoor unit EcoAir				Cooling module EcoHeat				
	Model	1800/1550	105	107	109	111	5	7.5	8.5	10.5	12
Main Measurements	mm	600 x 619 x 1797/1547	1190 x 1280 x 407		1190 x 1280 x 407		Match into CRC EcoEI, model 1800 (high)				
Weight	kg	170/155	100	105	135	140	71	81	81	91	96
Water volume boiler	litres	223	-	-	-	-	-	-	-	-	-
DHW, type/volume		Fin/5.7	-	-	-	-	-	-	-	-	-
Max op press/temp	bar/°C	2.5/100	-	-	-	-	-	-	-	-	-
Electrical data		230V 1ph 400V 3ph	230V 1ph 400V 3ph	- 400V 3ph	230V 1ph 400V 3ph	230V 1ph 400V 3ph	230V 1ph 400V 3ph	- 400V 3ph	230V 1ph 400V 3ph	230V 1ph 400V 3ph	- 400V 3ph
Output kW	230V 1ph 400V 3ph	6 + 6 9 + 6	6+HP 9+HP	6+HP 9+HP	6+HP 9+HP	6+HP 9+HP	6+HP 9+HP	6+HP 9+HP	6+HP 9+HP	6+HP 9+HP	6+HP 9+HP
Power limiter	kW	1.5/step	-	-	-	-	-	-	-	-	-
Internal pressure guard		Yes	-	-	-	-	-	-	-	-	-
Cover		Stainless steel / galvanised enamelled steel plate / sound absorbing ABS									

Hydraulic examples

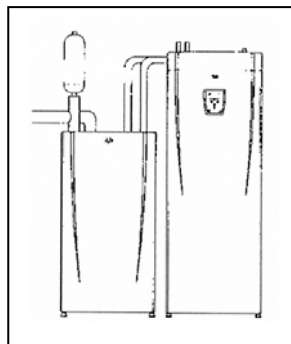
Installation example

EcoAir – EcoEI

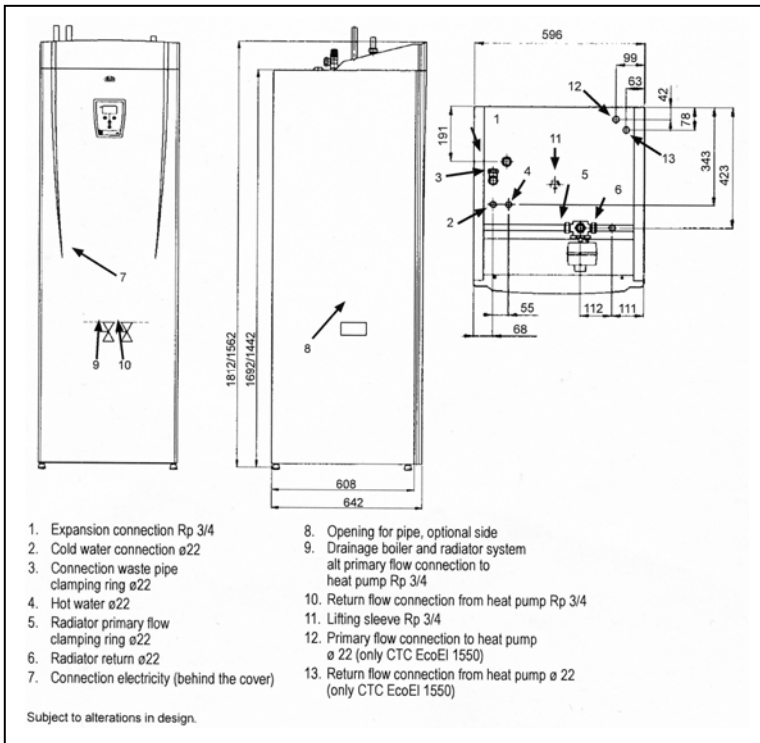


Installation example

EcoPart - EcoEI



Measures EcoEI / EcoHeat



NU-WAY

NU-WAY LIMITED, P.O. Box 1, Vines Lane, Droitwich,
Worcestershire, WR9 8NA
Tel: +44 (0)1905 794331 Fax: +44 (0)1905 794017
www.nu-way.co.uk



SPRINTBIO LIMITED, Deep Meadows Farm, Pink Road,
Lacey Green, Princes Risborough, Bucks. HP27 0RG
Tel: 0845 602 5289 Fax: 01844 399425
info@sprintbio.com